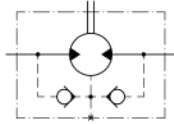
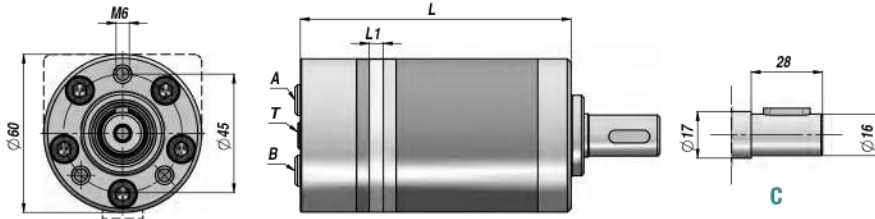


Standard: CONNESSIONI POSTERIORI - REAR PORTS - ANSCHLÜSSE HINTEN

VALVOLE UNIDIREZIONALI INCORPORATE
BUILT-IN CHECK VALVES
EINGEBAUTE RÜCKSCHLAGVENTILE



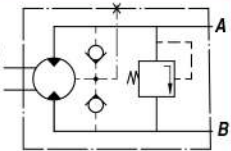
PREDISPOSTO PER IL DRENAGGIO
MACHINED FOR DRAIN CONNECTION
FÜR DRÄNLEITUNG GEEIGNET

Codice Code Bestell-Nr.	Tipo Type Typ	cm ³ /giro cm ³ /rev cm ³ /U	n. Max giri/min rpm - U/Min.	M Max daNm	Q MAX l/min	P MAX bar			A - B	T	L	L1	kg
						Caduta Drop Gefälle Δp	Ingresso Inlet Eingang	Ritorno Return Rücklauf					
LAVORO CONTINUO - CONTINUOUS WORK - DAUERARBEIT													
MPM008NC16	MPM 8 C	8,2	1950	1,1	16	105	140	140 *	3/8"	1/8"	104	3,5	1,90
MPM012NC16	MPM 12 C	12,9	1550	1,6	20	105	140	140 *			106	5,5	2,00
MPM020NC16	MPM 20 C	20,0	1000	2,5	20	105	140	140 *			109	8,5	2,10
MPM032NC16	MPM 32 C	31,8	630	4,0	20	105	140	140 *			114	13,5	2,20
MPM040NC16	MPM 40 C	40,0	500	4,1	20	82,5	140	140 *			117,5	17,0	2,30
MPM050NC16	MPM 50 C	50,0	400	4,5	20	70	140	140 *	121,5	21,0	2,50		

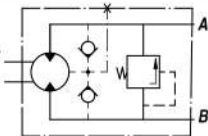
* = CON DRENAGGIO - WITH DRAIN - MIT DRÄNLEITUNG

OPTION

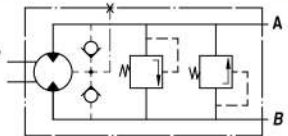
P.../R
VMP SULLA LINEA "A"
RELIEF VALVE ON LINE "A"
DBV AUF LEITUNG "A"



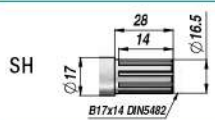
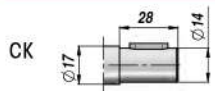
P.../L
VMP SULLA LINEA "B"
RELIEF VALVE ON LINE "B"
DBV AUF LEITUNG "B"



.../D
VMP SULLE LINEE "A/B"
RELIEF VALVE ON LINES "A/B"
DBV AUF LEITUNGEN "A/B"

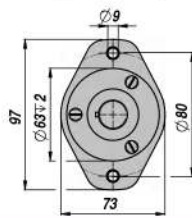


OPTION



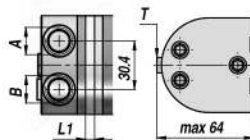
OPTION

F: (Oval Mount)

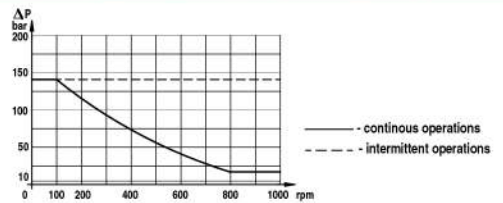


OPTION

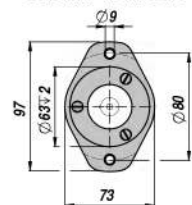
S: CONNESSIONI LATERALI
SIDE PORTS
ANSCHLÜSSE SEITLICH



**PRESSIONE MAX. AL RITORNO SENZA DRENAGGIO
MAX. RETURN PRESSURE WITHOUT DRAIN
MAX GEGENDRUCK OHNE DRÄNLEITUNG**



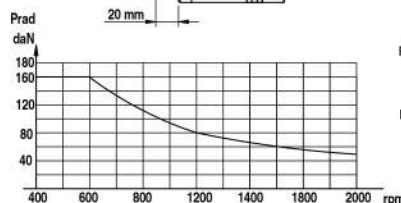
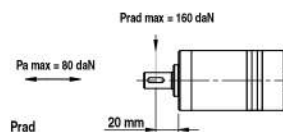
FLANGE KIT
Code: MF48443014



CON N.3 VITI M6x14"
WITH No.3 SCREWS M6x14
MIT Nr.3 SCHRAUBEN M6x14

**CARICHI AMMESSI SULL'ALBERO
PERMISSIBLE SHAFT LOADS
ZULÄSSIGE WELLENBELASTUNGEN**

Albero-Shaft-Welle: "C-CK-SH"



Prad = Carico radiale
Radial load
Radiale Belastung
Pa = Carico assiale
Axial load
Axiale Belastung