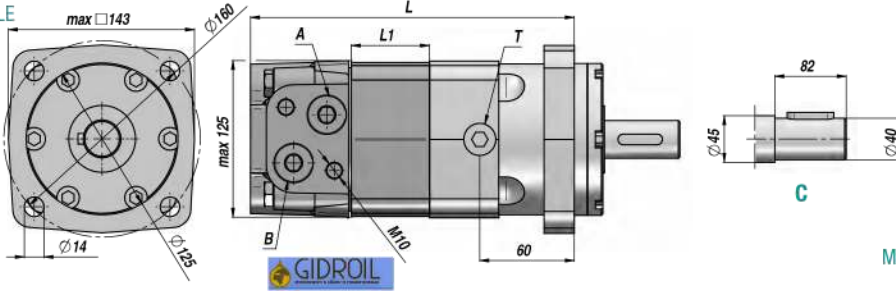
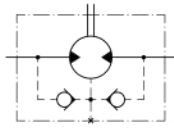
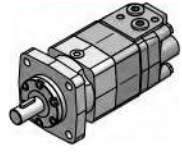


Standard: CONNESSIONI LATERALI - SIDE PORTS - ANSCHLÜSSE SEITLICH

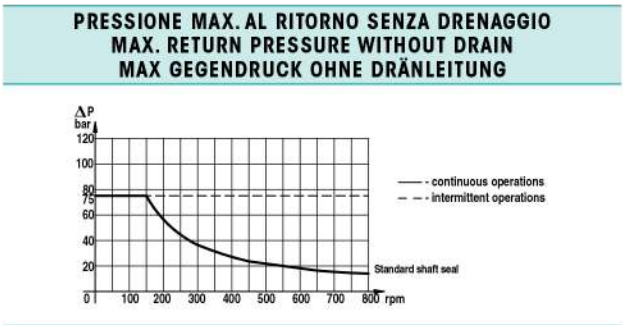
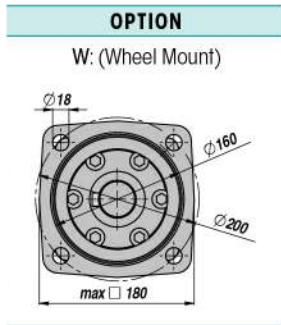
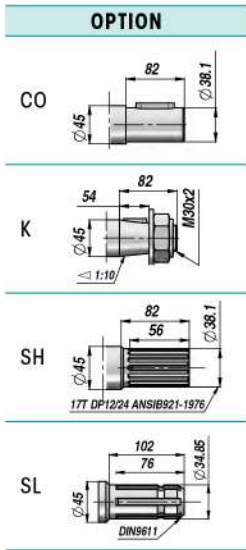
VALVOLE UNIDIREZIONALI INCORPORATE
BUILT-IN CHECK VALVES
EINGEBAUTE RÜCKSCHLAGVENTILE



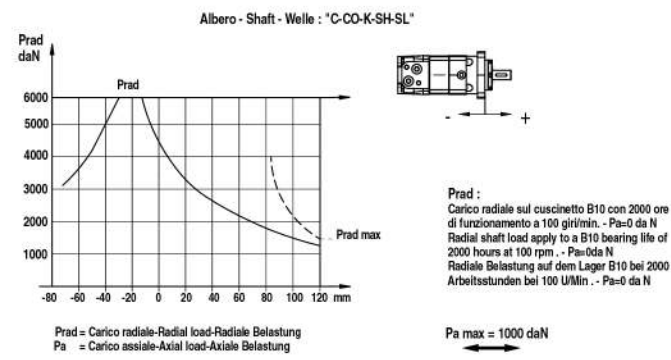
PREDISPOSTO PER IL DRENAGGIO
MACHINED FOR DRAIN CONNECTION
FÜR DRÄNLEITUNG GEEIGNET

Codice Code Bestell-Nr.	Tipo Type	cm ³ /giro cm ³ /rev cm ³ /U	n. Max giri/min rpm - U/Min.	M Max daNm	Q MAX l/min	P MAX bar			A - B	T	L	L1	kg
						Caduta Drop Gefälle Δp	Ingresso Inlet Eingang	Ritorno Return Rücklauf					
LAVORO CONTINUO - CONTINUOUS WORK - DAUERARBEIT													
MPT160NC40	MPT 160 C	161,1	622	47	100	200	210	140 *	3/4"	1/4"	190	16,5	20,00
MPT200NC40	MPT 200 C	201,4	620	59	125	200	210	140 *			195	21,5	20,50
MPT250NC40	MPT 250 C	251,8	496	73	125	200	210	140 *			201	27,8	21,00
MPT315NC40	MPT 315 C	326,3	382	95	125	200	210	140 *			211	37,0	22,00
MPT400NC40	MPT 400 C	410,9	304	108	125	180	210	140 *			221	47,5	23,00
MPT500NC40	MPT 500 C	523,6	238	122	125	160	210	140 *			235	61,5	24,00
MPT630NC40	MPT 630 C	631,2	197	130	125	140	210	140 *			231	57,5	24,00
MPT725NC40	MPT 725 C	724,3	172	127	125	120	210	140 *			240	66,5	24,50

* = CON DRENAGGIO - WITH DRAIN - MIT DRÄNLEITUNG



**CARICHI AMMESSI SULL'ALBERO
PERMISSIBLE SHAFT LOADS
ZULÄSSIGE WELLENBELASTUNGEN**



VERSIONI SPECIALI - SPECIAL VERSIONS - SPEZIELLE VERSIONEN

W: versione ruota - wheel mount - Radversion
S/V: versioni corte - short versions - kurze Versionen
M: versione rinforzata - reinforced version - verstärkte Version