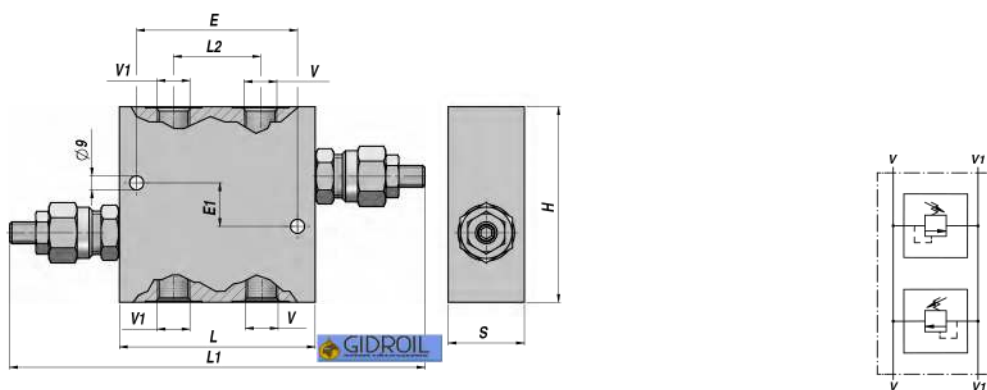
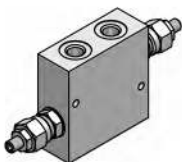


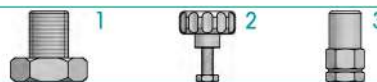
VBDC 35



Codice Code Bestell-Nr.	V BSP	V1 BSP	Q MAX l/min	P MAX bar	Tipo Type Typ	L	L1	L2	E	E1	H	S	kg
VAG022.0320B1	3/8"	3/8"	35	350	VBDC A35-020-B1	90	218	40	74	20	90	35	0,80
VAG022.0330B1	1/2"	1/2"	35	350	VBDC A35-030-B1	90	218	40	74	20	90	35	0,80

MOLLA - SPRING - FEDER: A = 5:50 bar - B = 40:210 bar (Standard) - C = 100:350 bar

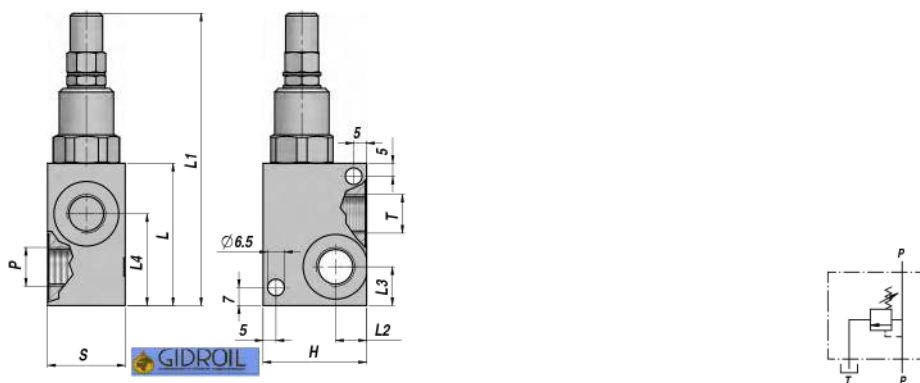
REGOLAZIONE 1 = Vite - Screw - Schraube (Standard)
 SETTING 2 = Volantino - Knob - Handrad
 EINSTELLUNG 3 = Vite+cappellotto - Screw+protection cup - Schraube+Schutzkappe



MONTAGGIO IN LINEA
 LINE MOUNTING
 REIHENMONTAGE

MATERIALE - MATERIAL: ALLUMINIO - ALUMINIUM

VMP/L



Codice Code Bestell-Nr.	P BSP	T BSP	Q MAX l/min	P MAX bar	Tipo Type Typ	L	L1	L2	L3	L4	H	S	kg
V0120.0003	1/4"	1/4"	30	300	VMP-L 1/4" C	52	114	12	13	34	40	30	0,47
V0120.0004	3/8"	3/8"	40	300	VMP-L 3/8" C	55	117	12	15	35,5	40	30	0,47

MOLLA - SPRING - FEDER: A = 10:50 bar - C = 10:180 bar (Standard) - E = 80:300 bar

MONTAGGIO IN LINEA
 LINE MOUNTING
 REIHENMONTAGE

MATERIALE - MATERIAL: ACCIAIO - STEEL - STAHL